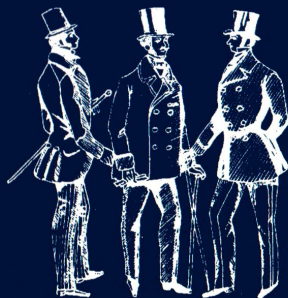


**THE
REP**

**73rd Season
1992 - 1993**

Programme 50p

*London
Assurance*



by Dion Boucicault

DON'T MISS OUR NEXT PRODUCTION

My Mother Said I Never Should



by Charlotte Keatley
Directed by David Bryan

The more things change, the more they stay the same. This could be the refrain of Charlotte Keatley's award-winning play, whose narrative flows seamlessly across half a century and two World Wars, from Manchester to London and back to Oldham, as four generations of women shape and re-create each others' lives.

Premiered to great critical acclaim at the Contact Theatre, Manchester, *My Mother Said I Never Should* won the Manchester Evening News Best New Play Award, 1987 and George Devine Award. It is recently released from the professional stage.

Box Office opens Wednesday, 27th January, 1993.



GOOD EVENING

.....and welcome to the
Repertory Theatre;
we hope that you will enjoy
your evening with us

Here is a little information about our theatre which first-time visitors may find helpful :

CAR PARKING

The Rep does not own any parking space, and patrons are respectfully requested to observe the usual bye-laws regarding parking in the neighbouring streets and to avoid inconveniencing local residents as much as possible. No responsibility can be accepted by the Stoke-on-Trent Repertory Theatre.

REFRESHMENTS

Theatre Bar : This is open from half an hour before the curtain rises until the end of normal licensing hours. Interval drinks may be ordered before the performance.

We must urgently advise patrons that our licence restricts the consumption of Bar Refreshments to that area of the theatre only. Persons under the age of 14 years are not permitted to enter the Theatre Bar for refreshments.

Coffee ; Coffee will be served to patrons in their seats during the interval: Coffee tickets are available in the auditorium and should be purchased before the performance.

Confectionery : A full range is available, and on sale in the auditorium before the performance. Patrons are respectfully asked not to rustle confectionery wrappings, however, as it can mar the enjoyment of others.

SMOKING : Smoking is no longer permitted in the auditorium.

PHOTOGRAPHY : Photography and/or tape (including videotape) recordings in the auditorium during a public performance are prohibited.

The Rep is a member of the Little Theatre Guild of Great Britain, and is affiliated to the British Theatre Association and International Amateur Theatre Association.

We look forward to seeing you at our next production

MY MOTHER SAID I NEVER SHOULD by Charlotte Keatley
at the Rep 2nd February - 13th February, 1993

THEATRE HIRE

The theatre is at times available for hire, stage facilities and the services, where relevant, of the Stage Crew and Lighting and Sound Technicians - along with Front of House and other staff - being included in our very competitive rates. Please ask for details.

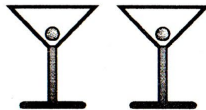
TICKET RESERVATIONS



We accept telephone bookings against Credit Cards - all major cards are accepted. Please have your details to hand when calling.

INTERVAL DRINKS

Interval drinks may be ordered at the bar before the performance commences.



Stoke-on-Trent Repertory Theatre

presents

by special arrangement with Samuel French Ltd.

'LONDON ASSURANCE'

by Dion Boucicault

1 - 5 and 8 - 12 December, 1992

**DESIGNED & DIRECTED BY
BRIAN P. HADLEY**

ASSISTANT DIRECTOR : JOHN K. COLLIER

SCENIC ARTIST COLIN CHESTERTON

PRODUCTION MANAGER ... RICHARD MASTERS

Acknowledgements

Specialist Wardrobe Care and Dry-cleaning for the Repertory Theatre courtesy of **Central Cleaners**, 163 Hamill Road, Burslem.

**WE ARE INDEBTED TO THE ST. JOHN AMBULANCE BRIGADE,
WHOSE MEMBERS VOLUNTARILY ATTEND ALL OUR
PUBLIC PERFORMANCES.**

London Assurance

by Dion Boucicault

Synopsis of Scenes

ACT I

SCENE 1

An anti-room in Sir Harcourt Courtley's house
in Belgrave square, London: 9.30 am

SCENE 2

The lawn before Oak Hall, Siddingham:
Max Harkaway's residence

SCENE 3

Oak Hall: early evening, before dinner.

ACT II

SCENE 1

Oak Hall: later the same evening

SCENE 2

In the garden of Oak Hall: 11 pm the
following evening

SCENE 3

Oak Hall: later

Cast

Sir Harcourt Courtly	Ken Lowe
Charles Courtly	John Wicks
Max Harkaway	Trevor Barlow
Adolphus Spanker	John Cooper
Dazzle	Simon Bland
Mark Meddle	John Cooke
Cool	Andrew McGovern
James	Robert Bagguley
Martin	John Steele
Solomon Isaacs	Keith Williams
Jenks	John Steele
Grace	Michaela Warrilow
Lady Gay Spanker	Sue Thompson
Pert	Nancy James

* * * * *

This adaptation first performed by the Royal Shakespeare
Theatre Company at the Aldwych Theatre,
London, in 1970.

* * * * *

Smoking is not permitted in the auditorium

PRODUCTION TEAM

Stage Manager (for this production)	MIKE ADAMS
Lighting Designer	STUART CAMPBELL
Lighting Technician.....	TINA CAMPBELL
Sound Designer.....	TED DUTTON
Sound Technician	STUART CAMPBELL
Assistant Stage Managers.....	MARTIN ALLSOP GILL FRANKLIN BEVERLEY HALFPENNY BILL HANCOCK JAN JOHNSON SHELLEY RIDDELL BERNADETTE SHEPPARD YVONNE TIPPING
Wardrobe Mistress	ALISON TOWNSEND
Properties	DEBBIE ROWLEY
Company Photographer	PETER CROFT
Theatre Bar Manager	JUDY ADAMS
Front of House Manager	ANDREW MORREY
Box Office Managers	STELLA WOOLSCROFT BRENDA SWANCOTT
Refreshment Organiser	SANDY HOLLAND
Art Exhibition Co-ordinator	PAUL M. CLARKE
Programme	MADELEINE POTTINGER TINA CAMPBELL

ABOUT THE AUTHOR ...

Dion Boucicault was born in 1822 but left Ireland at an early age to divide his life and work between England and America. After his initial success as a dramatist with 'London Assurance' in 1841 he embarked on a series of historical plays in London, the best known of which were 'The Corsican Brothers' (1852) and 'Louis XI' (1855). He then went to America and made his reputation in New York with such plays as 'The Poor of New York' (1857), 'Jessie Brown' (1858) and 'Dot' (1862). He died in New York in 1890.

... AND THE PLAY

'London Assurance' is the story of four love affairs: the love affair of Grace and Charles; the love affair of Pert and Jenks; the love affair of Mr Spanker and Lady Gay and the love affair of Sir Harcourt Courtley and his mirror. This desolute Narcissus straddles the play, excluding and excluded, none the wiser and none the happier for his experiences - simply older. His is the posture of emptiness.

There is something oddly anachronistic about 'London Assurance', the dramatic ancestry is of the 18th century - the 'Comedy of Manners' - and despite its popularity it had scarcely any progeny.

Ronald Eyre's adaptation of 'London Assurance' was first performed by the Royal Shakespeare Theatre Company at the Aldwych Theatre, London, in 1970.

NEW THEATRE UPDATE

December, '92

CURRENT POSITION

- ◆ The new theatre design has been revised to incorporate the results of the survey of the Leek Road site and the Structural Engineer's designs. The latest plans are on display at the NEW THEATRE INFORMATION DESK, located at the front of the auditorium.
- ◆ Based on the modified designs a more accurate cost estimate has been prepared by our Quantity Surveyor.
- ◆ As an alternative to building a new home for the Rep, we are currently investigating the possibility of reviving the Longton 'Empire' Theatre. The theatre is particularly intimate and a fine example of the work of Frank Matcham, the well known Victorian theatre architect (who was also responsible for the Buxton Opera House.)

WHY A NEW HOME?

Since 1933 the present theatre has served the Rep well, and we are all extremely fond of it. The building is approaching its 114th birthday and is unfortunately coming to the end of its useful life. To preserve the building's life beyond the 1990's would require expenditure of several hundred thousand pounds.

The theatre has therefore committed itself to a future that will last well beyond the year 2000. For further information please do not hesitate to ask at the NEW THEATRE INFORMATION DESK.

FUND RAISING

Stoke-on-Trent Repertory Theatre is an amateur organisation and, since its founding over 70 years ago, has operated without significant financial subsidy. The Rep does not have the capital reserves to undertake a project of this magnitude on its own, and we have therefore turned to the local area for support.

HOW YOU CAN HELP

- ◆ Would you donate, say, £5 a month by Deed of Covenant, allowing the Rep to reclaim 33p from the Inland Revenue for each £1 donated ?
- ◆ Would you like to have a seat in our new home named after yourself, a loved one or your company ? Seats are available for £100 as part of our 'Buy a Seat' scheme.
- ◆ Do you know of a firm that might be willing to provide sponsorship or donations in the form of cash, goods or services ?
- ◆ Would you make a direct donation to the Building Development Fund ?
- ◆ Do you know of a contact name in a company that we could approach directly for assistance ?

If you would like to help in any of the ways outlined above, or in any other way, please make yourself known at the NEW THEATRE INFORMATION DESK, located at the front of the auditorium.

MERCHANDISE

For the 1992-93 season we have launched a range of REP merchandise. Initially this includes REP sweatshirts, REP mugs (limited edition), REP pens (rollerball) and REP car window stickers. For Christmas, we are also carrying a range of seasonal cards.

All items are available at the NEW THEATRE INFORMATION DESK.

THE REP

Stoke-on-Trent Repertory Theatre,
Beresford Street, Shelton, Stoke-on-Trent. ST4 2EX
Telephone (0782) 44784

73rd Season 1992/1993

ABSENT FRIENDS by Alan Ayckbourn
6 - 10 and 13 - 17 October, 1992
Box Office opens 30th September

LONDON ASSURANCE by Dion Boucicault
1 - 5 and 8 - 12 December, 1992
Box Office opens 25th November

CHRISTMAS AT THE REP
19 **SOLD OUT** November, 1992

MY MOTHER SAID I NEVER SHOULD
by Charlotte Keatley
2 - 6 and 9 - 13 February, 1993
Box Office opens 27th January

OUTSIDE EDGE by Richard Harris
23 - 27 and 30 March - 3 April, 1993
Box Office opens 17th March

THE CRUCIBLE by Arthur Miller
18 - 22 and 25 - 29 May, 1993
Box Office opens 12th May

THE YOUNG REP
- details to be announced -

BOX OFFICE

OPENS
4.30 p.m.

TELEPHONE
44784

CLOSES
7.00 p.m.